

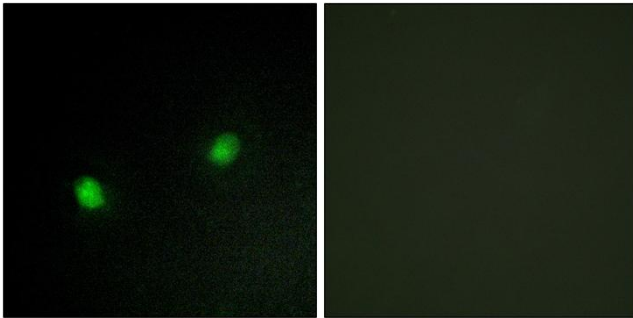


KOX4 Polyclonal Antibody

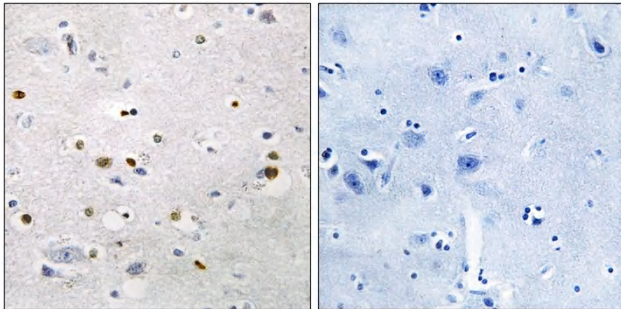
Catalog No	YP-Ab-01844
Isotype	IgG
Reactivity	Human;Mouse
Applications	IHC;IF;ELISA
Gene Name	ZNF7
Protein Name	Zinc finger protein 7
Immunogen	The antiserum was produced against synthesized peptide derived from human ZNF7. AA range:41-90
Specificity	KOX4 Polyclonal Antibody detects endogenous levels of KOX4 protein.
Formulation	Liquid in PBS containing 50% glycerol, 0.5% BSA and 0.02% sodium azide.
Source	Polyclonal, Rabbit,IgG
Purification	The antibody was affinity-purified from rabbit antiserum by affinity-chromatography using epitope-specific immunogen.
Dilution	Immunohistochemistry: 1/100 - 1/300. Immunofluorescence: 1/200 - 1/1000. ELISA: 1/20000. Not yet tested in other applications.
Concentration	1 mg/ml
Purity	≥90%
Storage Stability	-20°C/1 year
Synonyms	ZNF7; KOX4; Zinc finger protein 7; Zinc finger protein HF.16; Zinc finger protein KOX4
Observed Band	
Cell Pathway	Nucleus .
Tissue Specificity	Ubiquitously present in many human cell lines of different embryological derivation.
Function	function:May be involved in transcriptional regulation.,similarity:Belongs to the krueppel C2H2-type zinc-finger protein family.,similarity:Contains 1 KRAB domain.,similarity:Contains 15 C2H2-type zinc fingers.,tissue specificity:Ubiquitously present in many human cell lines of different embryological derivation.,
Background	function:May be involved in transcriptional regulation.,similarity:Belongs to the krueppel C2H2-type zinc-finger protein family.,similarity:Contains 1 KRAB domain.,similarity:Contains 15 C2H2-type zinc fingers.,tissue specificity:Ubiquitously present in many human cell lines of different embryological derivation.,
matters needing attention	Avoid repeated freezing and thawing!

**Usage suggestions**

This product can be used in immunological reaction related experiments. For more information, please consult technical personnel.

Products Images

Immunofluorescence analysis of HeLa cells, using ZNF7 Antibody. The picture on the right is blocked with the synthesized peptide.



Immunohistochemistry analysis of paraffin-embedded human brain tissue, using ZNF7 Antibody. The picture on the right is blocked with the synthesized peptide.